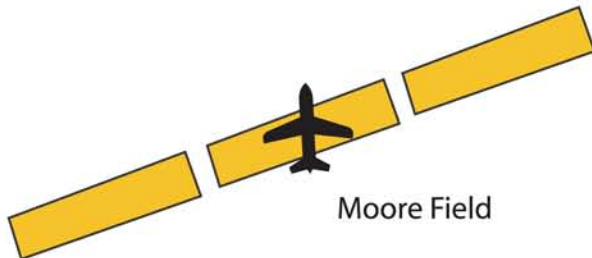
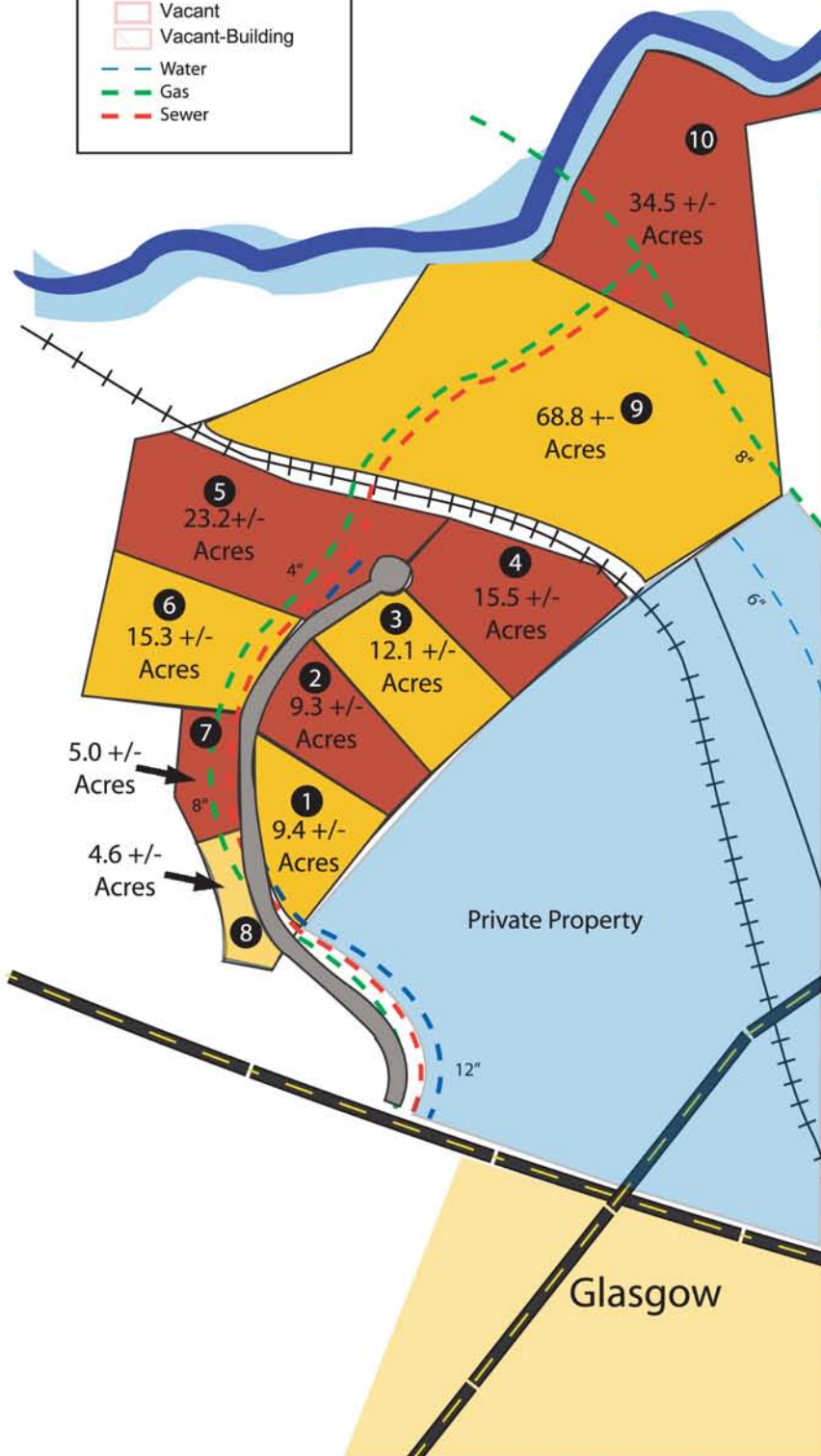


- Local Airport
- US Highway
- State Road
- Local Road
- Rail
- Municipal Boundary
- Tract Status**
- Occupied
- Other
- Vacant
- Vacant-Building
- Water
- Gas
- Sewer



Moore Field



Highland Glen Industrial Park Site 009-005 -- 309.7 Acres

LOCATION: Within northwestern city limits of Glasgow
ZONING: I-2 (Heavy Industrial)
HIGHWAY ACCESS: US 68/KY 80 along southern boundary; Louie B. Nunn Parkway interchange approximately 3.3 miles southeast via US 68/KY 80 and US 31E Bypass
COMMERCIAL AIR ACCESS: Louisville International-Standiford Field
 Distance: 90 miles north of Glasgow
RAILROAD: Glasgow Railway/CSX passes through the site
WATER: Glasgow Water Company
 Size Line: 12-inch line serves the site; 12-inch line along south side of US 68; 6-inch line east of site along Oil City Rd.
SEWER: Glasgow Water Company
 Size Line: 8-inch gravity line serves the site; 8-inch force main line serves the site
NATURAL GAS: Atmos Energy Corporation
 Size Line: 4-inch line serves the site; 8-inch line serves the site
ELECTRICITY: Farmers RECC
BROADBAND (Type:Service): ILEC: South Central Rural Telephone Cooperative Corporation Inc.
FLOOD DATA: A small portion of Tract 01 is in the 100-yr intermediate flood plain
OWNERSHIP: Tract 01, 02 & 05 - Glasgow/Barren County Industrial Development & Economic Authority; Tract 03 & 04 - Private
SCHOOL DISTRICT: Barren County
PRICE PER ACRE: \$26,000

